



Black Diamond

North America: Black Diamond Equipment, Ltd.
2064 East 3900 South
Salt Lake City, UT 84124

Europe: Black Diamond Equipment
Hans-Maier-Strasse 9
6020, Innsbruck, Austria

www.BlackDiamondEquipment.com

© Black Diamond Equipment, Ltd. 2021

M13105_C

⚠️ WARNING [EN]

For climbing and mountaineering only. Climbing and mountaineering are dangerous. Understand and accept the risks involved before participating. You are responsible for your own actions and decisions. Minors and others not able to assume this responsibility must be under the direct control of an experienced and responsible person. Before using this product, read and understand all instructions and warnings that accompany it and familiarize yourself with its proper use, capabilities and limitations. Read the instructions in contact Black Diamond if you are uncertain about how to use this product. Do not modify this product in any way. Failure to read and follow these warnings can result in severe injury or death!

KEY: Approved use Risk of accident or injury Examination required

INSTRUCTIONS FOR USE—PASSIVE PROTECTION

Keep instructions for future reference. This pamphlet explains correct use and some common misuses for the climbing equipment depicted in the illustrations. Other possible misuses exist. Correct equipment use and the maximum load will reduce some of the risks associated with climbing. Black Diamond® Stoppers, Offset Stoppers, and Hexentrics are one part of the safety system which protects the climber from a fall from height and should only be used with other CE/CEN-certified climbing and mountaineering equipment. (See accompanying illustrations)

CARE AND MAINTENANCE

Climbing gear must not come into contact with corrosive materials such as battery acid, battery fumes, solvents, chlorine bleach, antifreeze, isopropyl alcohol or gasoline. After contact with saltwater or salt air, always rinse and dry textile products, and rinse, dry and lubricate metal products.

INSTRUCTIONS FOR USE—PASSIVE PROTECTION

Keep instructions for future reference. This pamphlet explains correct use and some common misuses for the climbing equipment depicted in the illustrations. Other possible misuses exist. Correct equipment use and the maximum load will reduce some of the risks associated with climbing. Black Diamond® Stoppers, Offset Stoppers, and Hexentrics are one part of the safety system which protects the climber from a fall from height and should only be used with other CE/CEN-certified climbing and mountaineering equipment. (See accompanying illustrations)

CARE AND MAINTENANCE

Climbing gear must not come into contact with corrosive materials such as battery acid, battery fumes, solvents, chlorine bleach, antifreeze, isopropyl alcohol or gasoline. After contact with saltwater or salt air, always rinse and dry textile products, and rinse, dry and lubricate metal products.

INSTRUCTIONS FOR USE—PASSIVE PROTECTION

Keep instructions for future reference. This pamphlet explains correct use and some common misuses for the climbing equipment depicted in the illustrations. Other possible misuses exist. Correct equipment use and the maximum load will reduce some of the risks associated with climbing. Black Diamond® Stoppers, Offset Stoppers, and Hexentrics are one part of the safety system which protects the climber from a fall from height and should only be used with other CE/CEN-certified climbing and mountaineering equipment. (See accompanying illustrations)

STORAGE AND TRANSPORT

(See accompanying illustrations)

ADOPTING STOPPERS AND HEXES

We strongly discourage secondhand use. You must know the history of your equipment to be able to trust it.

Black Diamond Stoppers, Offset Stoppers, and Hexentrics conform to EN 12270:2013, the European Standard for Mountaineering equipment-Checks-Safety Requirements and test methods.

MARKINGS (WHEN PRESENT)

The following marks are found on Black Diamond Stoppers and Hexentrics:

Black Diamond's logo.

10 kN: The rated strength of the Stopper or Hexentric in both position one (B1) and position two (B2).

106 kN: The rated strengths of the Stopper or Hexentric in position one (B1) and position two (B2).

XXXX: Date Code, for example, the number 8184 may appear which indicates that the Stopper or Hexentric was manufactured on the 18th day of 2018.

PPE: Pictogram advising users to read the instructions and warnings.

AFNOR Certification (NF no. 0033) - 11 rue Francis de Pressensé, 93571 La Plaine Saint Denis Cedex, France.

CE: The mark of conformity indicates fulfillment of the requirements of EU Directive 2001/95/EC (EN 12270:2013 - 13322 Marseille Cedex 16 - FRANCE).

CE: The mark of conformity indicates fulfillment of the requirements of EU Directive 2001/95/EC (EN 12270:2013 - 13322 Marseille Cedex 16 - FRANCE).

CE: The mark of conformity indicates fulfillment of the requirements of EU Directive 2001/95/EC (EN 12270:2013 - 13322 Marseille Cedex 16 - FRANCE).

CE: The mark of conformity indicates fulfillment of the requirements of EU Directive 2001/95/EC (EN 12270:2013 - 13322 Marseille Cedex 16 - FRANCE).

CE: The mark of conformity indicates fulfillment of the requirements of EU Directive 2001/95/EC (EN 12270:2013 - 13322 Marseille Cedex 16 - FRANCE).

CE: The mark of conformity indicates fulfillment of the requirements of EU Directive 2001/95/EC (EN 12270:2013 - 13322 Marseille Cedex 16 - FRANCE).

CE: The mark of conformity indicates fulfillment of the requirements of EU Directive 2001/95/EC (EN 12270:2013 - 13322 Marseille Cedex 16 - FRANCE).

CE: The mark of conformity indicates fulfillment of the requirements of EU Directive 2001/95/EC (EN 12270:2013 - 13322 Marseille Cedex 16 - FRANCE).

CE: The mark of conformity indicates fulfillment of the requirements of EU Directive 2001/95/EC (EN 12270:2013 - 13322 Marseille Cedex 16 - FRANCE).

CE: The mark of conformity indicates fulfillment of the requirements of EU Directive 2001/95/EC (EN 12270:2013 - 13322 Marseille Cedex 16 - FRANCE).

CE: The mark of conformity indicates fulfillment of the requirements of EU Directive 2001/95/EC (EN 12270:2013 - 13322 Marseille Cedex 16 - FRANCE).

CE: The mark of conformity indicates fulfillment of the requirements of EU Directive 2001/95/EC (EN 12270:2013 - 13322 Marseille Cedex 16 - FRANCE).

CE: The mark of conformity indicates fulfillment of the requirements of EU Directive 2001/95/EC (EN 12270:2013 - 13322 Marseille Cedex 16 - FRANCE).

CE: The mark of conformity indicates fulfillment of the requirements of EU Directive 2001/95/EC (EN 12270:2013 - 13322 Marseille Cedex 16 - FRANCE).

CE: The mark of conformity indicates fulfillment of the requirements of EU Directive 2001/95/EC (EN 12270:2013 - 13322 Marseille Cedex 16 - FRANCE).

CE: The mark of conformity indicates fulfillment of the requirements of EU Directive 2001/95/EC (EN 12270:2013 - 13322 Marseille Cedex 16 - FRANCE).

CE: The mark of conformity indicates fulfillment of the requirements of EU Directive 2001/95/EC (EN 12270:2013 - 13322 Marseille Cedex 16 - FRANCE).

CE: The mark of conformity indicates fulfillment of the requirements of EU Directive 2001/95/EC (EN 12270:2013 - 13322 Marseille Cedex 16 - FRANCE).

CE: The mark of conformity indicates fulfillment of the requirements of EU Directive 2001/95/EC (EN 12270:2013 - 13322 Marseille Cedex 16 - FRANCE).

CE: The mark of conformity indicates fulfillment of the requirements of EU Directive 2001/95/EC (EN 12270:2013 - 13322 Marseille Cedex 16 - FRANCE).

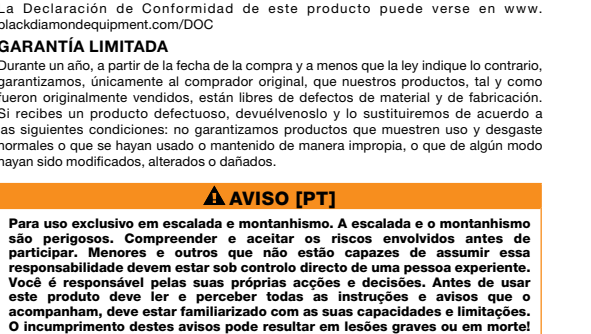
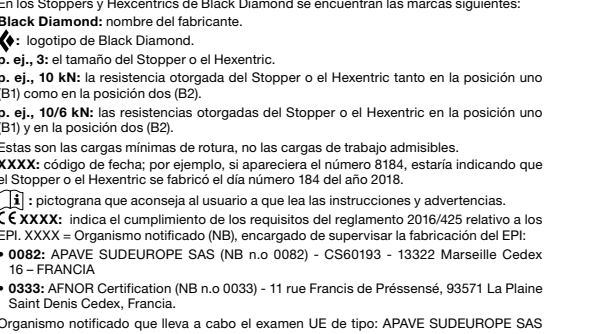
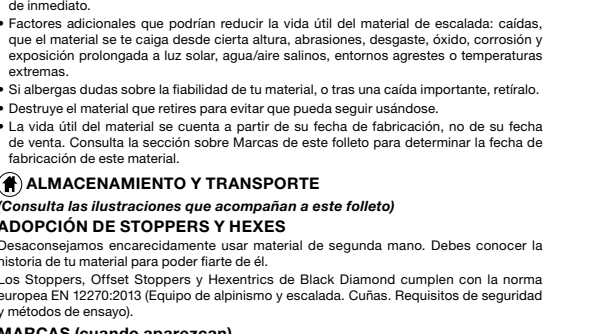
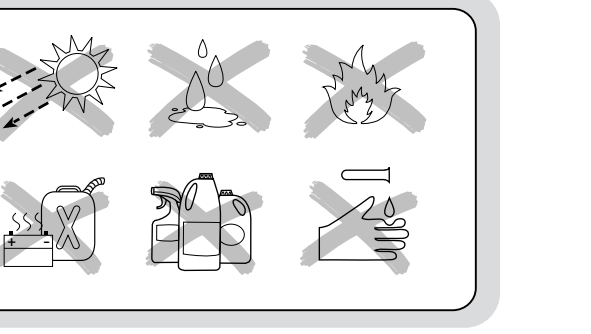
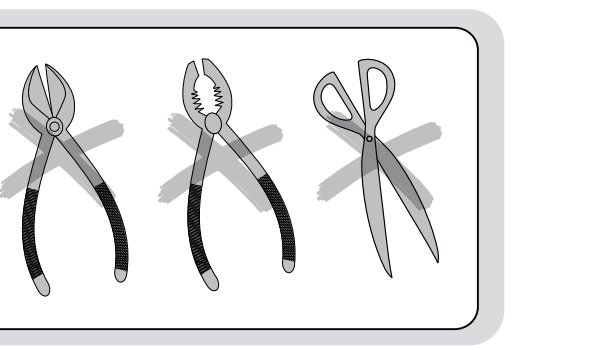
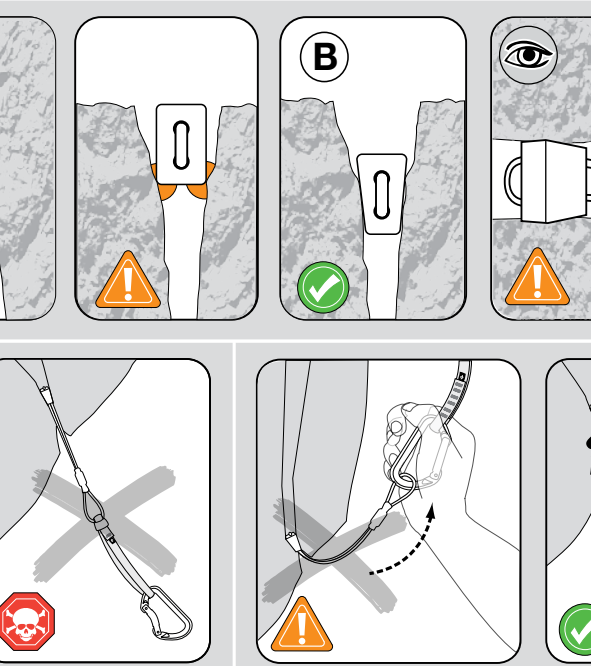
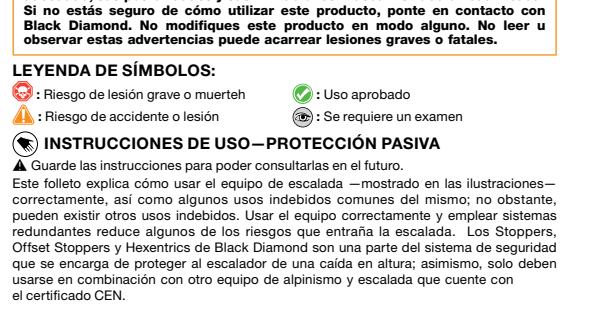
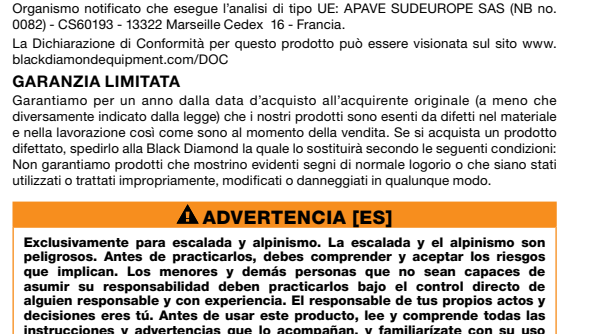
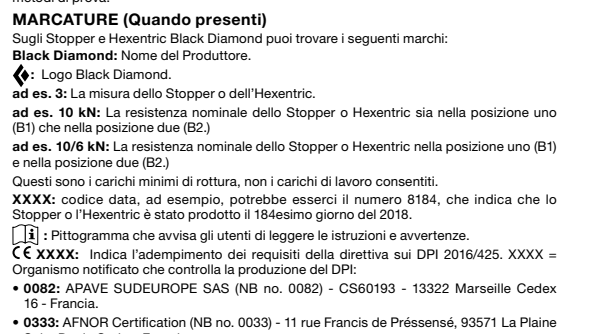
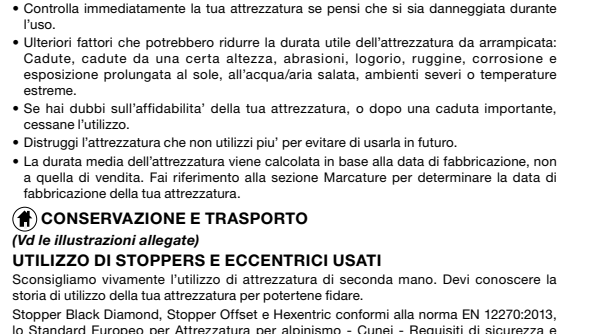
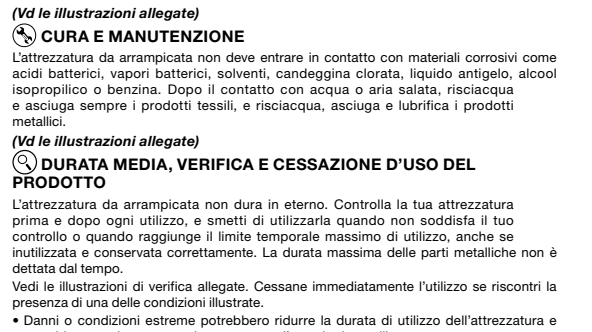
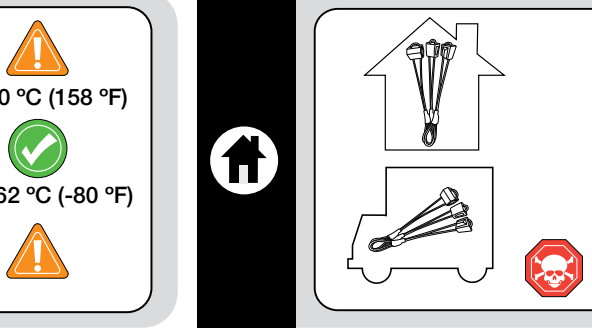
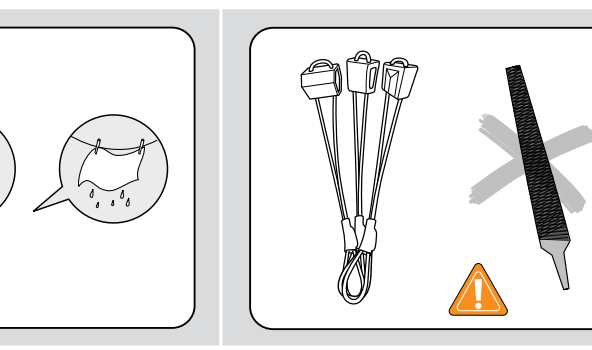
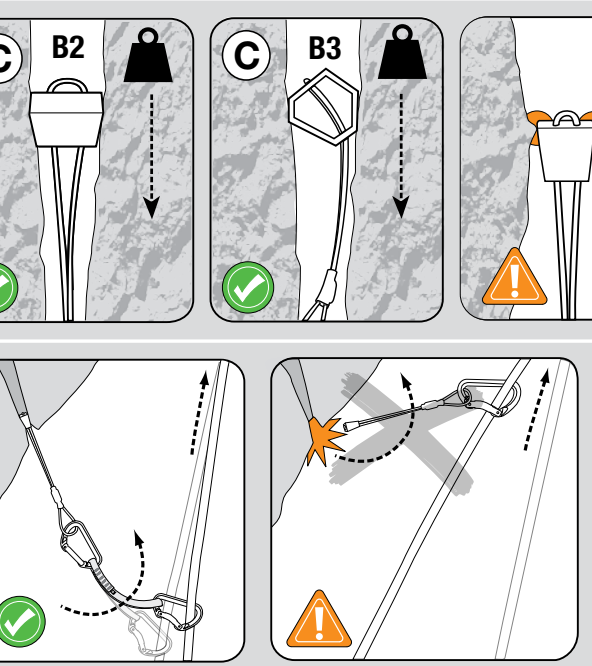
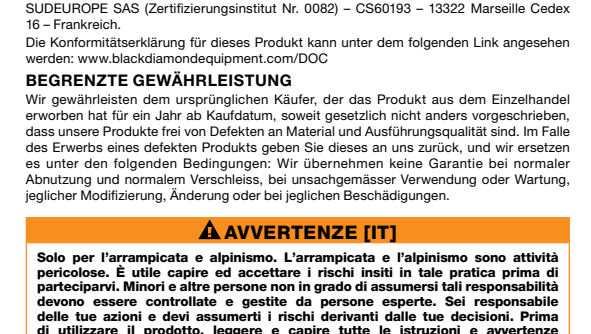
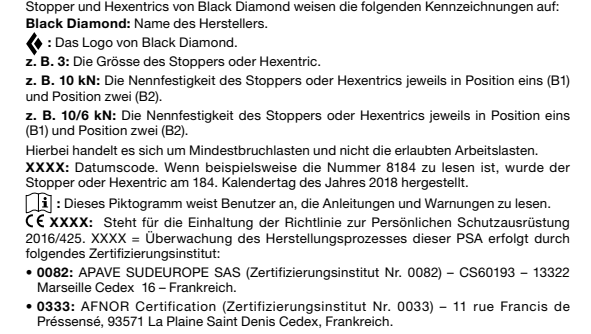
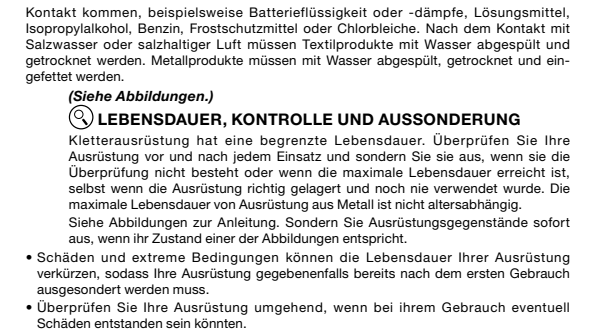
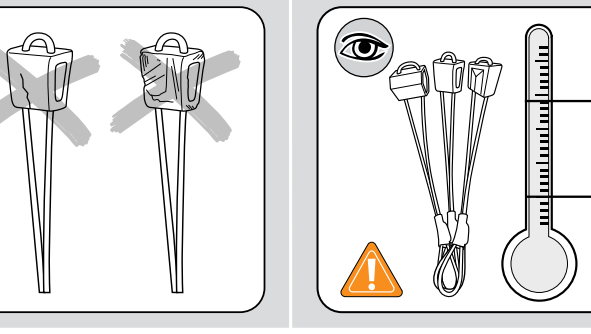
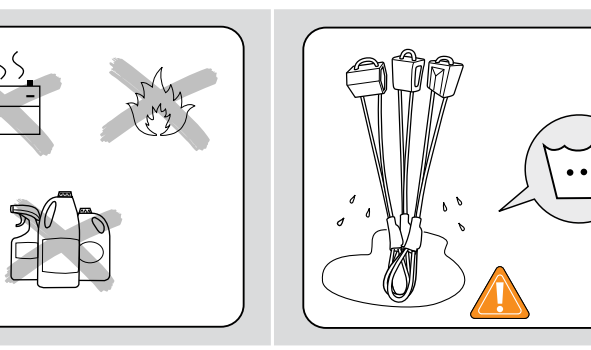
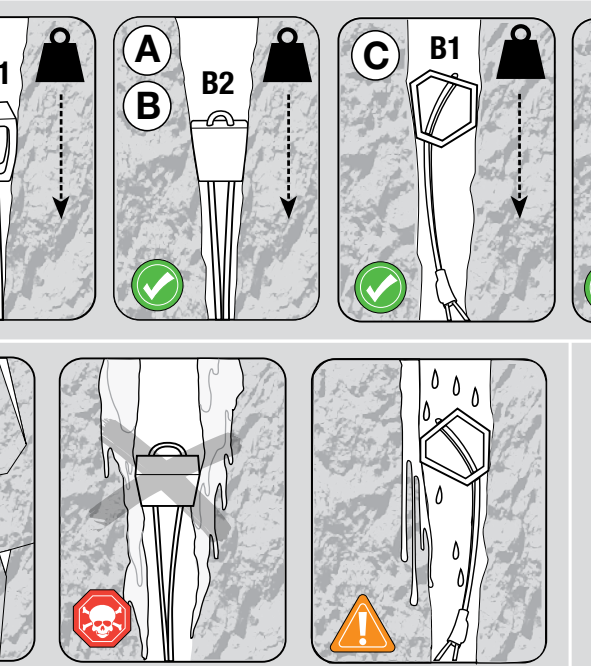
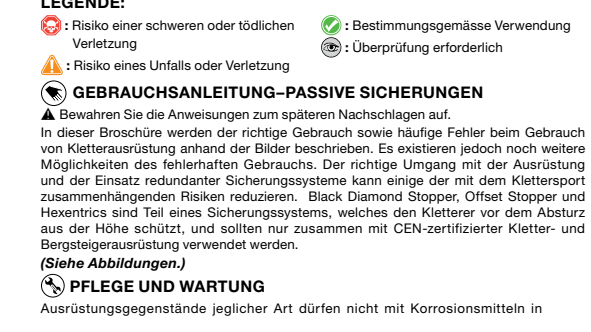
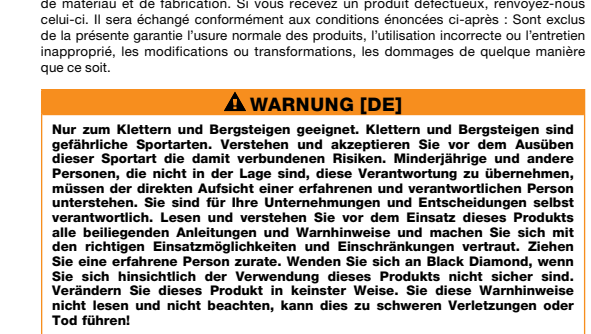
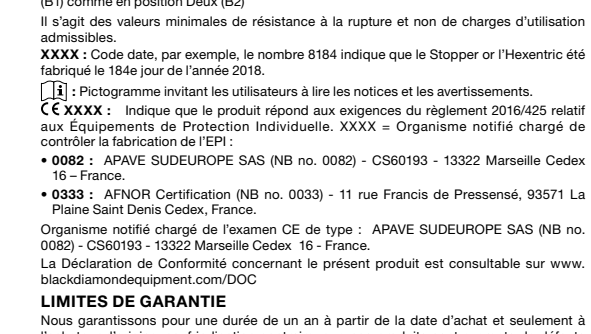
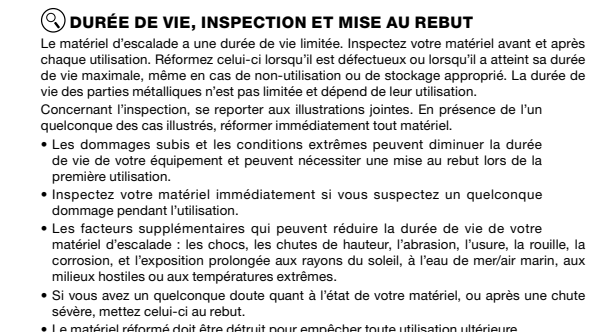
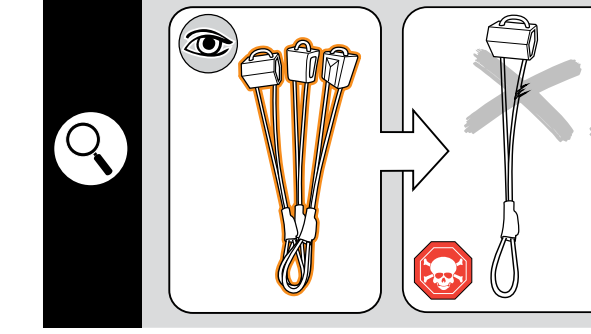
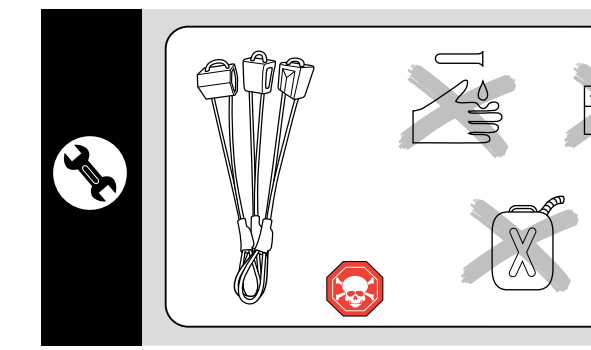
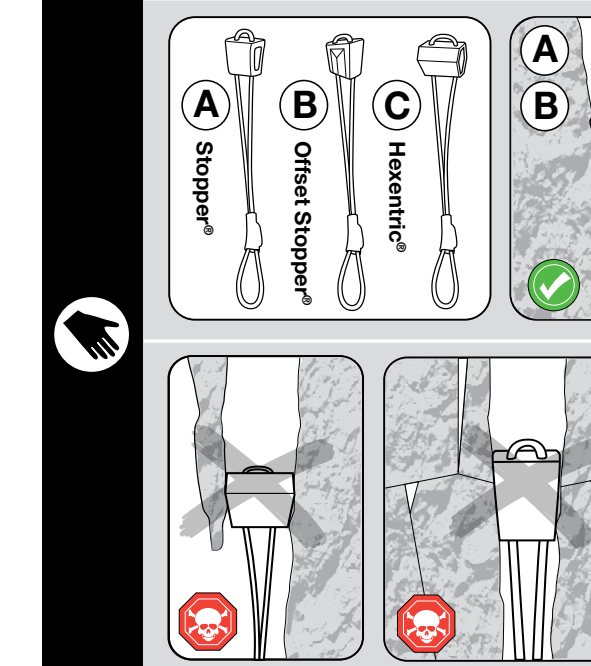
CE: The mark of conformity indicates fulfillment of the requirements of EU Directive 2001/95/EC (EN 12270:2013 - 13322 Marseille Cedex 16 - FRANCE).

CE: The mark of conformity indicates fulfillment of the requirements of EU Directive 2001/95/EC (EN 12270:2013 - 13322 Marseille Cedex 16 - FRANCE).

CE: The mark of conformity indicates fulfillment of the requirements of EU Directive 2001/95/EC (EN 12270:2013 - 13322 Marseille Cedex 16 - FRANCE).

CE: The mark of conformity indicates fulfillment of the requirements of EU Directive 2001/95/EC (EN 12270:2013 - 13322 Marseille Cedex 16 - FRANCE).

CE: The mark of conformity indicates fulfillment of the requirements of EU Directive 2001/95/EC (EN 12270:2013 - 13322 Marseille Cedex 16 - FRANCE).



A STOPPERS	
#	Weight
1-2	2 kN (450 lbf) / 2 kN (450 lbf)
3	5 kN (1,124 lbf) / 5 kN (1,124 lbf)
4	2 kN (450 lbf) / 2 kN (450 lbf)
6	3 kN (674 lbf) / 3 kN (674 lbf)
7	10 kN (2,248 lbf) / 10 kN (2,248 lbf)
8-9	8 kN (1,798 lbf) / 8 kN (1,798 lbf)
10-13	10 kN (2,248 lbf) / 10 kN (2,248 lbf)

B OFFSET STOPPERS	
#	Weight
7-11	10 kN (2,248 lbf) / 10 kN (2,248 lbf)

C HEXENTRICS	
#	Weight
1-3	6 kN (1,349 lbf) / 6 kN (1,349 lbf)
4-11	10 kN (2,248 lbf) / 10 kN (2,248 lbf)

ou ar salgado, lavar e secar sempre os produtos téxteis, e lavar, secar e lubrificar os produtos de metal.

RETIRADA DE USO

Inspeção o seu equipamento imediatamente, sempre que suspeitar de danos durante a utilização.

ARMAZENAMENTO E TRANSPORTE

CUIDADOS Y MANTENIMIENTO

CONSULTA LAS ILUSTRACIONES QUE ACOMPAÑAN A ESTE FOLLETO

CONSULTA LAS ILUSTRACIONES QUE ACOMPAÑAN A ESTE FOLLETO

CONSULTA LAS ILUSTRACIONES QUE ACOMPAÑAN A ESTE FOLLETO

CONSULTA LAS ILUSTRACIONES QUE ACOMPAÑAN A ESTE FOLLETO

CONSULTA LAS ILUSTRACIONES QUE ACOMPAÑAN A ESTE FOLLETO

CONSULTA LAS ILUSTRACIONES QUE ACOMPAÑAN A ESTE FOLLETO

CONSULTA LAS ILUSTRACIONES QUE ACOMPAÑAN A ESTE FOLLETO

CONSULTA LAS ILUSTRACIONES QUE ACOMPAÑAN A ESTE FOLLETO

CONSULTA LAS ILUSTRACIONES QUE ACOMPAÑAN A ESTE FOLLETO

CONSULTA LAS ILUSTRACIONES QUE ACOMPAÑAN A ESTE FOLLETO

CONSULTA LAS ILUSTRACIONES QUE ACOMPAÑAN A ESTE FOLLETO

CONSULTA LAS ILUSTRACIONES QUE ACOMPAÑAN A ESTE FOLLETO

CONSULTA LAS ILUSTRACIONES QUE ACOMPAÑAN A ESTE FOLLETO

CONSULTA LAS ILUSTRACIONES QUE ACOMPAÑAN A ESTE FOLLETO

CONSULTA LAS ILUSTRACIONES QUE ACOMPAÑAN A ESTE FOLLETO

CONSULTA LAS ILUSTRACIONES QUE ACOMPAÑAN A ESTE FOLLETO

CONSULTA LAS ILUSTRACIONES QUE ACOMPAÑAN A ESTE FOLLETO

CONSULTA LAS ILUSTRACIONES QUE ACOMPAÑAN A ESTE FOLLETO

CONSULTA LAS ILUSTRACIONES QUE ACOMPAÑAN A ESTE FOLLETO

CONSULTA LAS ILUSTRACIONES QUE ACOMPAÑAN A ESTE FOLLETO

CONSULTA LAS ILUSTRACIONES QUE ACOMPAÑAN A ESTE FOLLETO

CONSULTA LAS ILUSTRACIONES QUE ACOMPAÑAN A ESTE FOLLETO

CONSULTA LAS ILUSTRACIONES QUE ACOMPAÑAN A ESTE FOLLETO

CONSULTA LAS ILUSTRACIONES QUE ACOMPAÑAN A ESTE FOLLETO

CONSULTA LAS ILUSTRACIONES QUE ACOMPAÑAN A ESTE FOLLETO

CONSULTA LAS ILUSTRACIONES QUE ACOMPAÑAN A ESTE FOLLETO

CONSULTA LAS ILUSTRACIONES QUE ACOMPAÑAN A ESTE FOLLETO

CONSULTA LAS ILUSTRACIONES QUE ACOMPAÑAN A ESTE FOLLETO

CONSULTA LAS ILUSTRACIONES QUE ACOMPAÑAN A ESTE FOLLETO

CONSULTA LAS ILUSTRACIONES QUE ACOMPAÑAN A ESTE FOLLETO

CONSULTA LAS ILUSTRACIONES QUE ACOMPAÑAN A ESTE FOLLETO

CONSULTA LAS ILUSTRACIONES QUE ACOMPAÑAN A ESTE FOLLETO

CONSULTA LAS ILUSTRACIONES QUE ACOMPAÑAN A ESTE FOLLETO

CONSULTA LAS ILUSTRACIONES QUE ACOMPAÑAN A ESTE FOLLETO

CONSULTA LAS ILUSTRACIONES QUE ACOMPAÑAN A ESTE FOLLETO

CONSULTA LAS ILUSTRACIONES QUE ACOMPAÑAN A ESTE FOLLETO

CONSULTA LAS ILUSTRACIONES QUE ACOMPAÑAN A ESTE FOLLETO

CONSULTA LAS ILUSTRACIONES QUE ACOMPAÑAN A ESTE FOLLETO

CONSULTA LAS ILUSTRACIONES QUE ACOMPAÑAN A ESTE FOLLETO

CONSULTA LAS ILUSTRACIONES QUE ACOMPAÑAN A ESTE FOLLETO

CONSULTA LAS ILUSTRACIONES QUE ACOMPAÑAN A ESTE FOLLETO

CONSULTA LAS ILUSTRACIONES QUE ACOMPAÑAN A ESTE FOLLETO

CONSULTA LAS ILUSTRACIONES QUE ACOMPAÑAN A ESTE FOLLETO

CONSULTA LAS ILUSTRACIONES QUE ACOMPAÑAN A ESTE FOLLETO

CONSULTA LAS ILUSTRACIONES QUE ACOMPAÑAN A ESTE FOLLETO

CONSULTA LAS ILUSTRACIONES QUE ACOMPAÑAN A ESTE FOLLETO

CONSULTA LAS ILUSTRACIONES QUE ACOMPAÑAN A ESTE FOLLETO

CONSULTA LAS ILUSTRACIONES QUE ACOMPAÑAN A ESTE FOLLETO

Bemyndiget organ der har udført EU Type-prøven: APAVE SUEUROPE SAS (NB no. 0082) - CS60193 - 13322 Marseille Cedex 16 - FRANKRIK.

WAARSCHUWING (NL)

WAARSCHUWING (NL)

WAARSCHUWING (NL)

WAARSCHUWING (NL)

WAARSCHUWING (NL)

WAARSCHUWING (NL)

WAARSCHUWING (NL)

WAARSCHUWING (NL)

WAARSCHUWING (NL)

WAARSCHUWING (NL)

WAARSCHUWING (NL)

WAARSCHUWING (NL)

WAARSCHUWING (NL)

WAARSCHUWING (NL)

WAARSCHUWING (NL)

WAARSCHUWING (NL)

WAARSCHUWING (NL)

WAARSCHUWING (NL)

WAARSCHUWING (NL)

WAARSCHUWING (NL)

WAARSCHUWING (NL)

WAARSCHUWING (NL)

WAARSCHUWING (NL)

WAARSCHUWING (NL)

WAARSCHUWING (NL)

WAARSCHUWING (NL)

WAARSCHUWING (NL)

WAARSCHUWING (NL)

WAARSCHUWING (NL)

WAARSCHUWING (NL)

WAARSCHUWING (NL)

WAARSCHUWING (NL)

WAARSCHUWING (NL)

WAARSCHUWING (NL)

WAARSCHUWING (NL)

WAARSCHUWING (NL)

WAARSCHUWING (NL)

WAARSCHUWING (NL)

WAARSCHUWING (NL)

WAARSCHUWING (NL)

WAARSCHUWING (NL)

WAARSCHUWING (NL)

WAARSCHUWING (NL)

WAARSCHUWING (NL)

WAARSCHUWING (NL)

WAARSCHUWING (NL)

WAARSCHUWING (NL)

WAARSCHUWING (NL)

WAARSCHUWING (NL)

WAARSCHUWING (NL)

WAARSCHUWING (NL)

WAARSCHUWING (NL)

WAARSCHUWING (NL)

WAARSCHUWING (NL)

WAARSCHUWING (NL)

WAARSCHUWING (NL)

Metalen producten kan ertussen erter contact met sgepat.

LEVEDIT, INSPEKSIJON OG KASSERING

LEVEDIT, INSPEKSIJON OG KASSERING

